

Specification

Roast machine

Capacity : **70-175-350-700 lit.**

Roasting procedure : **ζεστός αέρας παραγόμενος στη βάση του μηχανήματος**

Burner power: **35-50-100-200kw**

Thermal Insulation Capacity: **92%**

Material drum - silo: **SS-304 (inox)**

Base material: **SS-304 (inox)**

Absence of cast-in fittings

Zero welding machine

Certified construction materials (CE)

PLC **Omron**

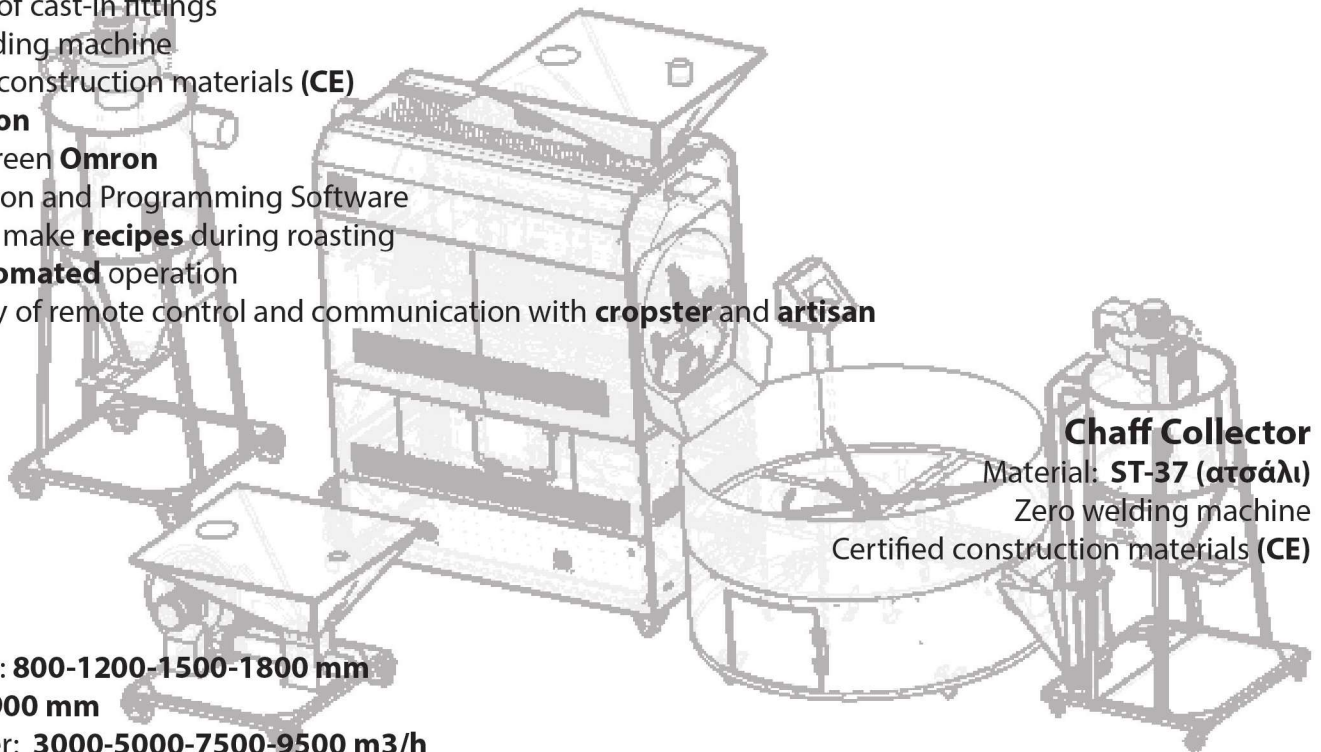
Touch Screen **Omron**

Automation and Programming Software

Ability to make **recipes** during roasting

Fully **automated** operation

Possibility of remote control and communication with **cropster** and **artisan**



Mixer

Diameter: **800-1200-1500-1800 mm**

Height : **900 mm**

Fan Power: **3000-5000-7500-9500 m3/h**

Cooling ability: **2,5 λεπτά (220oC - 38oC)**

Material : **SS-304 (inox)**

Zero welding machine

Certified construction materials (CE)

Chaff Collector

Material: **ST-37 (ατσάλι)**

Zero welding machine

Certified construction materials (CE)

Destoner

Diameter: **1200-1800 mm**

Foot print : **1000 mm x 1000 mm**

Height : **2050-2250 mm**

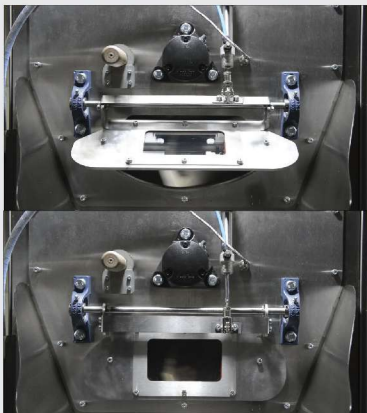
Fan power : **7500-9500 m3/h**

Material: **SS-304 (inox)**

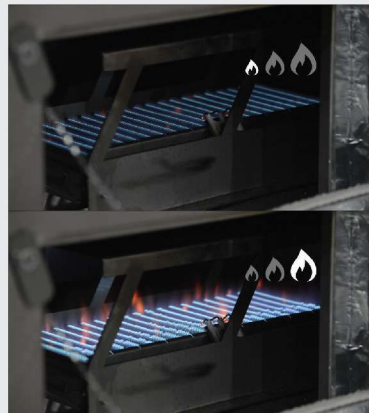
Zero welding machine

Certified construction materials (CE)

**Internal stirring
with flaps**



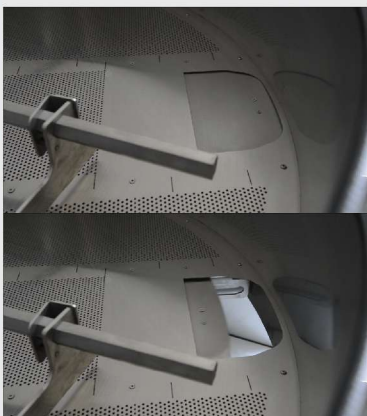
**Digital burner
setting**



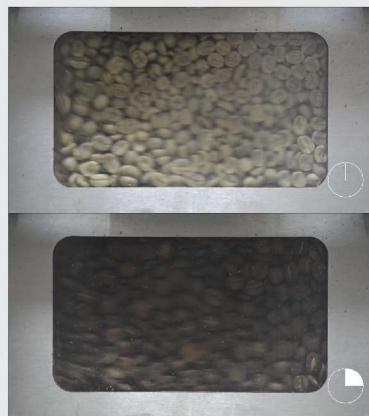
**Quick roast coffee drop
(3 sec)**



**Absolute application
of mixer outlet**



Large roasting window



**Destoner ergonomic
design**



**Quick cooling
of roasted coffee**



**Special design
of green coffee silo**



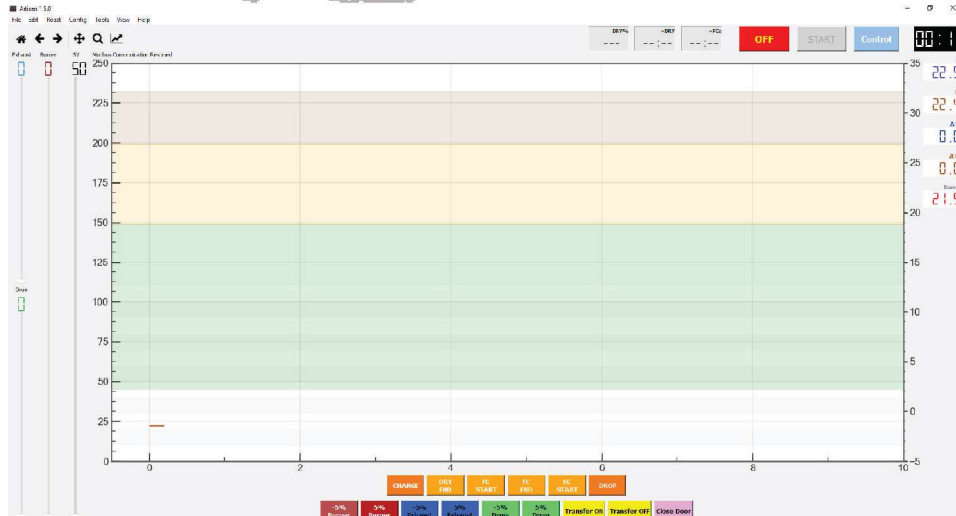
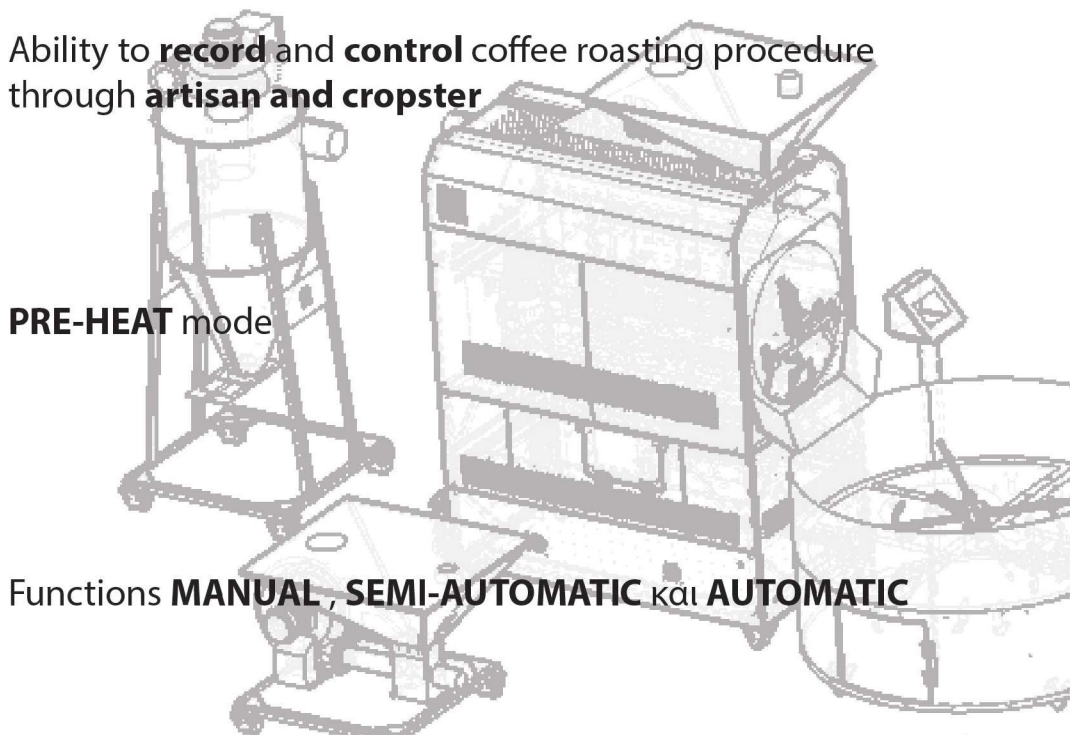
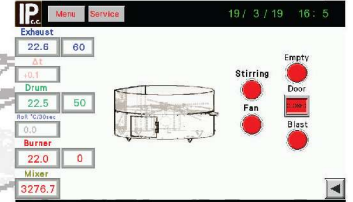
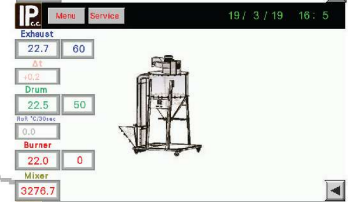
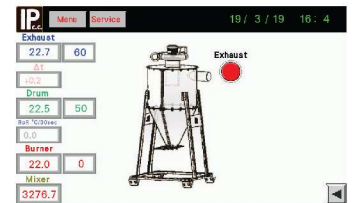
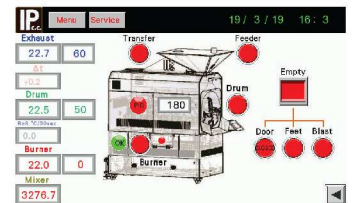
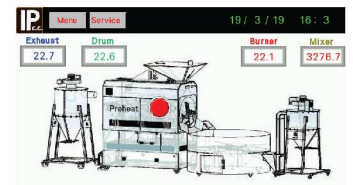
The basic equipment of the machine includes **PLC (OMRON)** and motion automats (**pneumatic pistons**)

Software for **easy and fast** machine control

Ability to **record** and **control** coffee roasting procedure through **artisan and cropster**

PRE-HEAT mode

Functions **MANUAL**, **SEMI-AUTOMATIC** και **AUTOMATIC**



Why choose the new iRm machines series?

Because I can accurately **check** the roasting profile **real time**

Because all construction materials are **suitable** for food and certified CE

Because they have **unique** technology to stabilize industrial coffee production.

Because we have experience since **1948**

Because we are waiting for you at our facility for a **real test** of the capabilities of our machines

When the experience , meets technology..





Authorised Distributor

*** Cyprus ***

*** Serbia ***

*** Balkans ***

*** Middle East ***

KQM
koupas motors

www.koupsmotors.com

iRm - Serier

70 - 175 - 350 - 700

When the experience , meets technology..

Design the future now!